

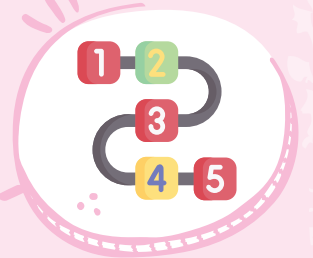
Challenges in memorizing math facts



Difficulty estimating money



Difficulty in solving math word problems



Sequencing problems, like ordering numbers or recounting events correctly



Avoiding math tasks due to stress or anxiety, avoiding games involving numbers



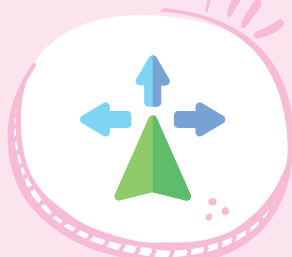
## DYSCALCULIA



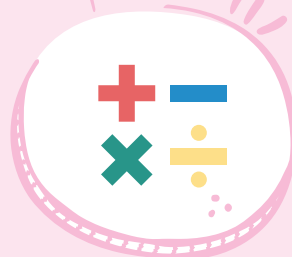
Struggles with time, including reading clocks or estimating durations



Difficulty in compare sizes or use numbers practically



Spatial awareness issues, like navigating directions or understanding maps



Difficulty grasping basic math like addition, subtraction, multiplication, and division

The above behaviors/symptoms are indicative and not necessarily all of them need to be present. Please, if you notice any strong elements from the behaviors/symptoms, consult a special/inclusive educator.

