



Sensitivity to noise, touch, smell or taste



Lack of respect for turns of speech



Difficulty interpreting facial expressions and maintaining eye contact



Exceptional abilities in areas such as memory, mathematics or music



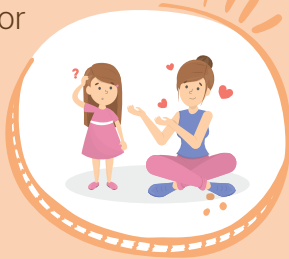
ASPERGER'S SYNDROME



Establishment of repetitive routines and patterns of behavior



Very specific and focused interest



Difficulty understanding the emotions of others and expressing their own feelings



Problems relating to peers and possibility of experiencing depressive moods due to social difficulties

The above behaviors/symptoms are indicative and not necessarily all of them need to be present. Please, if you notice any strong elements from the behaviors/symptoms, consult a special/inclusive educator.

