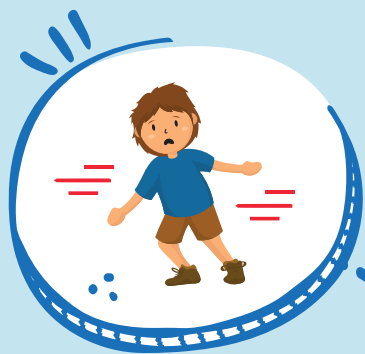




SPECTRUM



Difficulties in movements



Impaired fine motor skills



Coordination problems



Trouble understanding space



DYSPRAXIA



Challenges with tasks like writing, sketching, cutting with scissors, buttoning, and tying shoelaces



Impaired performance in spatial tasks, such as puzzle-solving or organizing toys

The above behaviors/symptoms are indicative and not necessarily all of them need to be present. Please, if you notice any strong elements from the behaviors/symptoms, consult a special/inclusive educator.



Co-funded by
the European Union

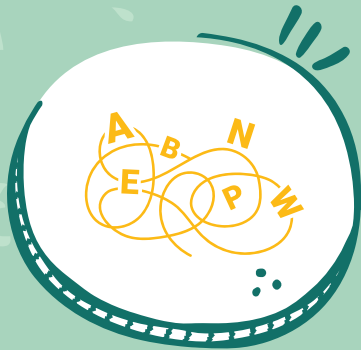
Funded by the European Union. Views and opinions expressed are however those of the author(s) only and do not necessarily reflect those of the European Union or the European Education and Culture Executive Agency (EACEA). Neither the European Union nor EACEA can be held responsible for them.
[Project Number: 2023-1-CZ01-KA220-SCH-000156646]



Omitting diacritical marks



Incorrect reading technique e.g. double or silent reading



Problems in understanding and interpreting the text read



Omitting or adding letters, syllables, guessing word endings



DYSLEXIA



Slow, laborious reading with fewer mistakes or, conversely, fast reading with more mistakes



Substitutions of similar letters: b-d-p; m-n; a-e, etc.

The above behaviors/symptoms are indicative and not necessarily all of them need to be present. Please, if you notice any strong elements from the behaviors/symptoms, consult a special/inclusive educator.



Co-funded by the European Union



Every student **like** the teacher.

Difficulties in acquiring grammatical rules and applying grammatical phenomena

Every day. **Everyday?**

Problems with word boundaries in writing

play**n**ground
plyground

Adding, omitting, skipping letters or syllables

à ê ü
õ ñ ē

Incorrect placement of accents

DYSORTHOGRAPHY

two children
were on their way
to shcool

Difficulties in distinguishing the syllables dy/di, ty/ti, ny/ni / Difficulties in consistently following lines of text

two children
were on their
way to shcool

Difficulties in distinguishing between short and long vowels / Difficulties in respecting line spacing or margins

The above behaviors/symptoms are indicative and not necessarily all of them need to be present. Please, if you notice any strong elements from the behaviors/symptoms, consult a special/inclusive educator.





SPECTRUM



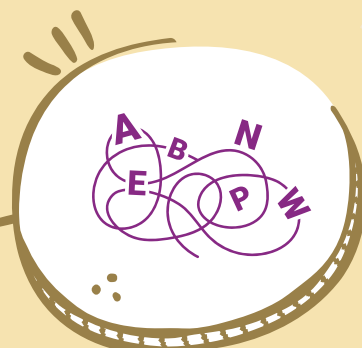
Disturbed spatio-temporal orientation



Weakening of gross and fine motor skills



Social-emotional problems



Difficulties with sentence structure and grammatical categories

DEVELOPMENTAL LANGUAGE DISORDER



Impaired speech comprehension, speech production or both at the same time



Difficulty with fluent narration and formulation of ideas in speech and written text

The above behaviors/symptoms are indicative and not necessarily all of them need to be present. Please, if you notice any strong elements from the behaviors/symptoms, consult a special/inclusive educator.

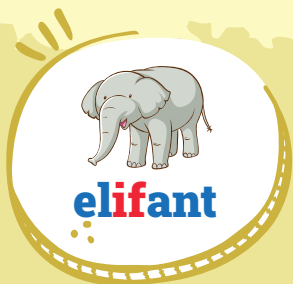


Co-funded by the European Union

Funded by the European Union. Views and opinions expressed are however those of the author(s) only and do not necessarily reflect those of the European Union or the European Education and Culture Executive Agency (EACEA). Neither the European Union nor EACEA can be held responsible for them. [Project Number: 2023-1-CZ01-KA220-SCH-000156646]



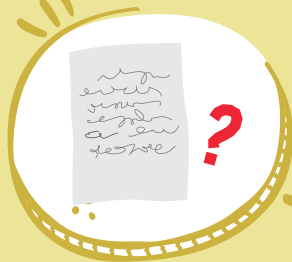
SPECTRUM



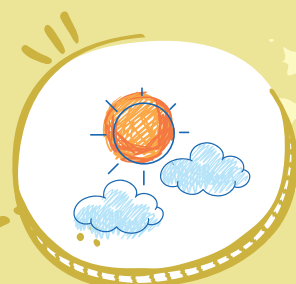
Spelling accuracy



Grammar and punctuation accuracy



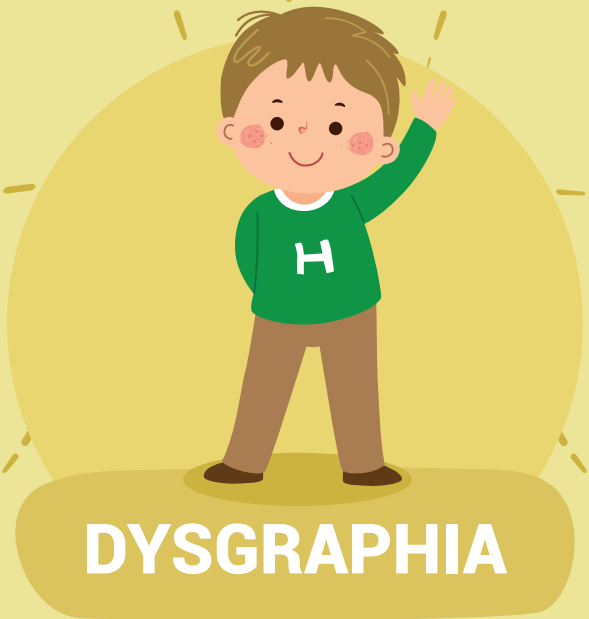
Impairment in written expression



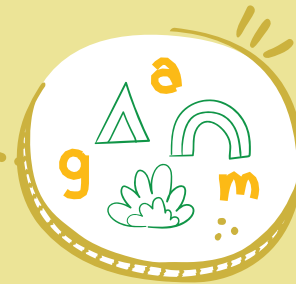
Difficulty following a line or staying within margins



Organisation and coherence of ideas in writing



DYSGRAPHIA



Trouble forming letters shapes



Tight, awkward, or painful grip on a pencil



Pronounced difference between spoken and written understanding of a topic



Discrepancy between intellect and performance in written expression

The above behaviors/symptoms are indicative and not necessarily all of them need to be present. Please, if you notice any strong elements from the behaviors/symptoms, consult a special/inclusive educator.

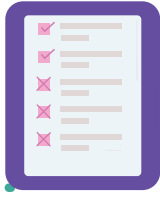


Co-funded by the European Union

Funded by the European Union. Views and opinions expressed are however those of the author(s) only and do not necessarily reflect those of the European Union or the European Education and Culture Executive Agency (EACEA). Neither the European Union nor EACEA can be held responsible for them. [Project Number: 2023-1-CZ01-KA220-SCH-000156646]



SPECTRUM



Doesn't follow directions



You have a hard time organizing tasks and activities



It doesn't finish tasks



Difficulty maintaining attention on activities

ADHD WITH ATTENTION DEFICIT PREDOMINANCE



Avoid engaging in tasks that require sustained mental effort



Makes careless mistakes in school or work assignments

The above behaviors/symptoms are indicative and not necessarily all of them need to be present. Please, if you notice any strong elements from the behaviors/symptoms, consult a special/inclusive educator.



Co-funded by the European Union

Funded by the European Union. Views and opinions expressed are however those of the author(s) only and do not necessarily reflect those of the European Union or the European Education and Culture Executive Agency (EACEA). Neither the European Union nor EACEA can be held responsible for them. [Project Number: 2023-1-CZ01-KA220-SCH-000156646]



Hyperactivity



Feeling
constantly restless



Manifested as excessive
physical activity



It is difficult to be quiet
or to remain seated



ADHD WITH PREDOMINANCE OF HYPERACTIVITY-IMPULSIVITY



Difficulty controlling
impulses



Interrupting or speaking at
inappropriate times



Act without thinking about
the consequences

The above behaviors/symptoms are indicative and not necessarily all of them need to be present. Please, if you notice any strong elements from the behaviors/symptoms, consult a special/inclusive educator.

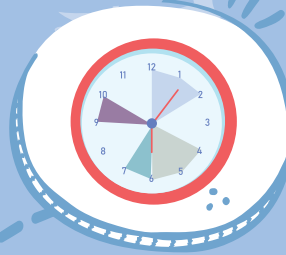


Co-funded by
the European Union

Funded by the European Union. Views and opinions expressed are however those of the author(s) only and do not necessarily reflect those of the European Union or the European Education and Culture Executive Agency (EACEA). Neither the European Union nor EACEA can be held responsible for them.
[Project Number: 2023-1-CZ01-KA220-SCH-000156646]



Resistance to change



Irrational insistence on routines



Repetition of rigid, repetitive movements or behaviors



Problems in verbal and nonverbal communication



AUTISM WITHOUT DISORDER OF INTELLECTUAL IMPAIRMENT



Difficulty making social connections



Lack of Contact with the Environment



Differences in nonverbal cues such as eye contact and gestures

The above behaviors/symptoms are indicative and not necessarily all of them need to be present. Please, if you notice any strong elements from the behaviors/symptoms, consult a special/inclusive educator.



Co-funded by the European Union

Funded by the European Union. Views and opinions expressed are however those of the author(s) only and do not necessarily reflect those of the European Union or the European Education and Culture Executive Agency (EACEA). Neither the European Union nor EACEA can be held responsible for them.
[Project Number: 2023-1-CZ01-KA220-SCH-000156646]



Sensitivity to noise, touch, smell or taste



Lack of respect for turns of speech



Difficulty interpreting facial expressions and maintaining eye contact



Exceptional abilities in areas such as memory, mathematics or music



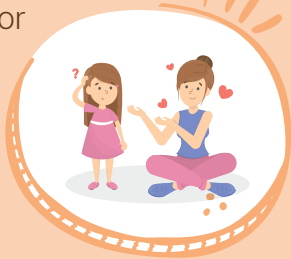
ASPERGER'S SYNDROME



Establishment of repetitive routines and patterns of behavior



Very specific and focused interest



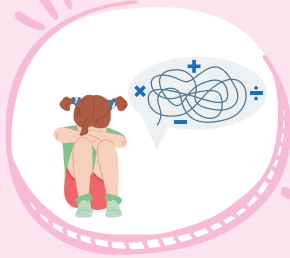
Difficulty understanding the emotions of others and expressing their own feelings



Problems relating to peers and possibility of experiencing depressive moods due to social difficulties

The above behaviors/symptoms are indicative and not necessarily all of them need to be present. Please, if you notice any strong elements from the behaviors/symptoms, consult a special/inclusive educator.





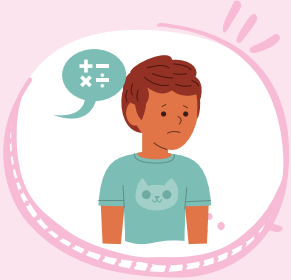
Challenges in memorizing math facts



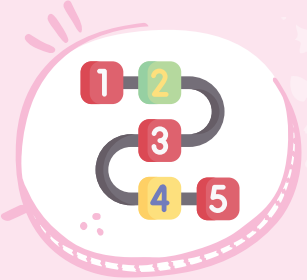
Difficulty estimating money



Difficulty in solving math word problems



Avoiding math tasks due to stress or anxiety, avoiding games involving numbers



Sequencing problems, like ordering numbers or recounting events correctly



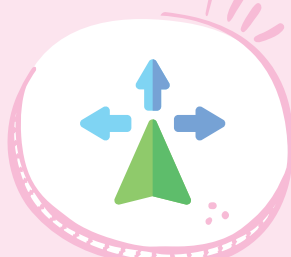
Struggles with time, including reading clocks or estimating durations



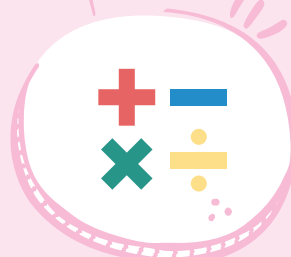
DYSCALCULIA



Difficulty in compare sizes or use numbers practically



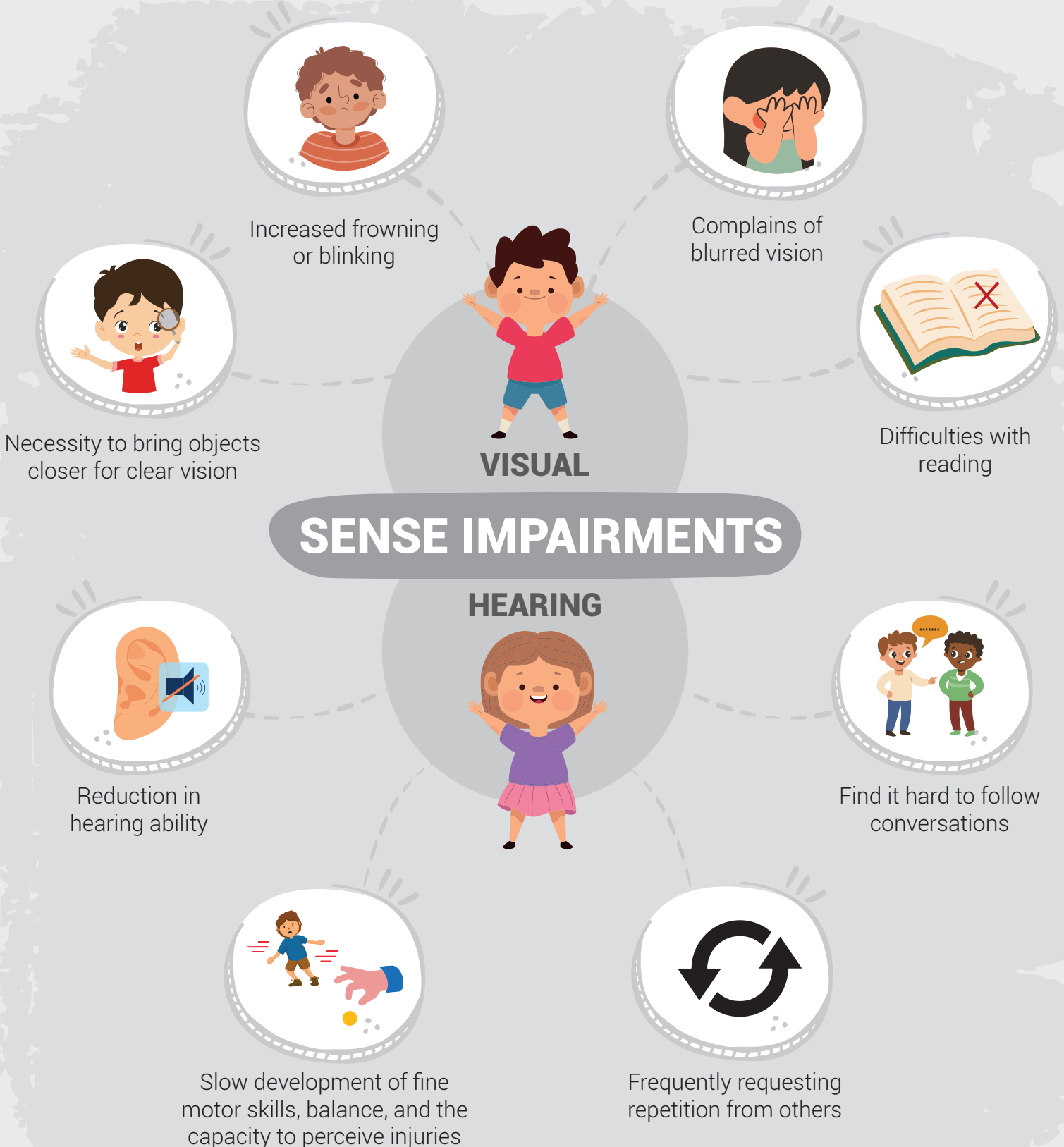
Spatial awareness issues, like navigating directions or understanding maps



Difficulty grasping basic math like addition, subtraction, multiplication, and division

The above behaviors/symptoms are indicative and not necessarily all of them need to be present. Please, if you notice any strong elements from the behaviors/symptoms, consult a special/inclusive educator.





The above behaviors/symptoms are indicative and not necessarily all of them need to be present. Please, if you notice any strong elements from the behaviors/symptoms, consult a special/inclusive educator.



Co-funded by
the European Union

Funded by the European Union. Views and opinions expressed are however those of the author(s) only and do not necessarily reflect those of the European Union or the European Education and Culture Executive Agency (EACEA). Neither the European Union nor EACEA can be held responsible for them.
[Project Number: 2023-1-CZ01-KA220-SCH-000156646]